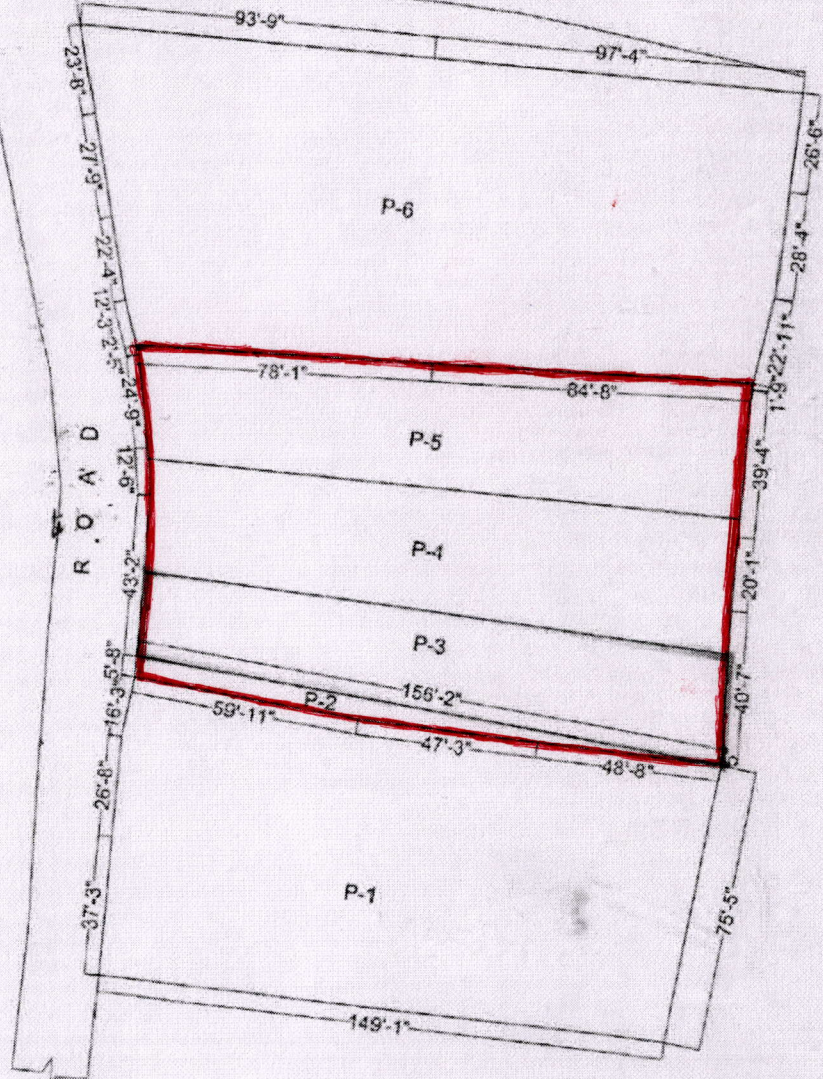


Municipal Holding No. 86, Tarafdar Para Road, Kolkata - 700151 lying and situated at Mouza- Jagaddal, J.L.No.71, R.S.No. 233, Touzi Nos. 151, 23, 69 Pargana- Magura, A.D.S.R.office and P.S. Sonarpur, comprising in R.S.Dag No.1002, corresponding L.R.Dag No.1164, appertaining to R.S.Khatian No. 1117 L.R.Khatian No.3121, 3122, 2855, .3513, 3514 & 3515 within Rajpur-Sonarpur Municipality Ward No.25

LATITUDE-22°25'19.6"N, LONGITUDE-88°23'46.2"E

AREA=P-2= 59.74 Sqm.(00 Ka - 14 Ch - 13 Sqft.)  
 AREA=P-3= 401.34 Sqm.(06 Ka - 00 Ch - 00 Sqft.)  
 AREA=P-4= 468.23 Sqm.(07 Ka - 00 Ch - 00 Sqft.)  
 AREA=P-5= 468.23 Sqm.(07 Ka - 00 Ch - 00 Sqft.)

SCALE = 1"=36'-0"



Drawn by:  
 P. Dey  
 Baghajatin

For PARADISE LAND & HOUSING CO.

*B. Banerjee*  
 06.03.2023 Proprietor